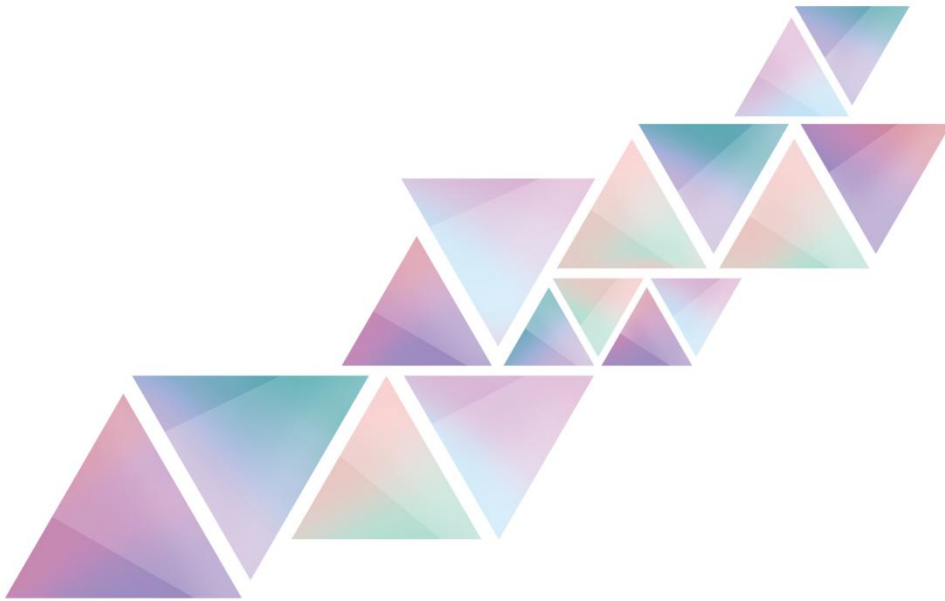


# GS063

## Smog sensor

Version: v1.1

Release Date: October 2021



## Specification



TEL 400 159 0808  
Web: [www.kystar.com.cn](http://www.kystar.com.cn)

**Beijing KYSTAR Technology Co., Ltd.**

Professional Ultra HD Video Display  
Control system integrated solution and service provider

## Version record

version number	Change details	release time
V1.0	first release	2020.01.15
V1.1	change cover	2021.10.25

## 1 Product overview

### 1.1 Product application

GS063 is a high-precision smog sensor, which uses a high-sensitivity smog sensor as the core detection device. It has the characteristics of wide measurement range, built-in alarm function, good linearity, convenient use, easy installation, and long transmission distance. place. The probe can be used to measure oil fume, smoke, etc. This product is uniquely designed, and the probe is easy to replace. RS485 interface, multiple modules can be connected to the bus network together, and the environment of multiple sites can be monitored in real time.

### 1.2 Features

- RS485 remote communication for remote control
- Low power consumption, high decibel alarm
- Sound and light alarm, long life
- Ceiling installation, simple and convenient
- Small and beautiful appearance

## 2 Product Appearance



Picture1: smog sensor

### 3 Technical parameter

Project	parameter value
parameter value	5VDC
Measuring range	0~2000ppm
measurement accuracy	Maximum allowable error: $\pm 7\%$ Repeat test: $\pm 5\%$ Temperature characteristic: $\pm 5\%/^{\circ}\text{C}$
Communicate port	RS485
Protocol	MODBUS RTU
Communicate address	1-35
baud rate	9600,8,n,1
Power consumption	2W
Cable length	5 meters (standard)
Install method	Indoor wall mount, ceiling mount
Operating environment	$-40^{\circ}\text{C}\sim+85^{\circ}\text{C}$

### 4 Dimensions



Picture 2 smog sensor